

## GEAR UNITS - GEARMOTORS

SEW offers a full line of high efficiency right-angle, inline, and parallel shaft gear units and modular gearmotors.

- Torque ranges to 469,000 lb-in
- Mounting, shaft, and coating options
- Finely stepped gear ratios
- Use with AC and servo motors
- Single- and multi-stage options
- Easy online configuration tool



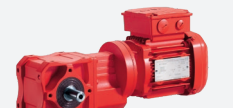
**R Series** — Inline helical-bevel gear units and gearmotors, available in single- or multi-stage configurations



**K Series** — Right-angle gear units and gearmotors with highly efficient helical-bevel and/or hypoid gearing



**S Series** — Right-angle helical-worm gear units and gearmotors. Economical, wear-free design.



**W Series** — Right-angle economical gearmotors with SPIROPLAN® gearing



**F Series** — Slim design parallel shaft helical gear units and gearmotors



**Stainless Steel** — Available in right angle and inline configurations, stainless gear units meet IP69K standards for wet areas subject to frequent cleaning.



**Mixer and Screw Conveyor Drives** — Optimized motor and gear unit options for mixing, agitating, and screw conveyor applications. Specialized options for extended bearing and seal life.



**TorqLOC®** — simple to use hollow-shaft shrink disc mounting system for use between the machine shaft and the gear unit.

## AC MOTORS - BRAKES - DIAGNOSTICS



Integral modular AC motors with IE1-IE4 efficiency. IEC and NEMA flange mounting compatible. Fractional to 500 HP.



**DRN.. Series** — For S1 continuous duty applications



**DR2S.. Series** — For S3 intermittent duty applications



**DR2C.. Series** — IE5 efficiency-rated permanent magnet synchronous motor for use with centralized or decentralized inverters



**Braakes** — Motors can be fitted with integrated mechanical brakes



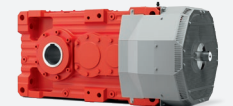
**Encoders** — Absolute, incremental, and resolver



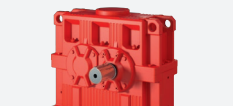
**Motor Diagnostics** — Brake, oil, and vibration sensors

## LARGE INDUSTRIAL GEAR UNITS

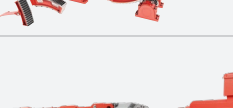
SEW-EURODRIVE's large industrial gearing line includes a wide range of ratios and torque ranges. Our modular design concept allows for multiple configurations using standard components, with global consistency.



- Helical, bevel-helical, and planetary designs
- Torque ratings to 50 million lb-in
- Finely stepped housing and shaft sizes
- Wide range of options and add-ons
- Specialized application packages:



- Bulk material handling
- Bucket elevators
- Cranes / hoists
- Mixing / aerating
- Mining
- Wastewater
- Grains processing
- Cement production
- Timber processing



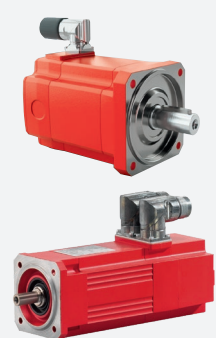
**AC Motors** — 4-pole motors for large industrial gear units, up to 500 HP.

**Girth Gears** — External ring gearing typically used to rotate large horizontal kilns and mills. Diameters up to 52 feet.



**Complete Drive Packages** — Design and assembly package solutions including motors, couplings, base-frames, lubrication systems and other customized accessories.

## SERVO MOTORS

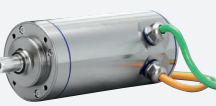


SEW's line of compact, low to medium inertia synchronous servomotors are available in multiple frame sizes, lengths, and speed classes.

- Dynamic torque range to 320 Nm
- Brake, feedback, and connector options
- Pair with our precision PxG planetary servo gear units, or the full line of SEW modular gear units
- Compatible with SEW inverters and the MOVI-C® automation platform
- Single cable technology for power and data with MOVILINK DDI® digital motor interface



**DR2L.. Series** — Asynchronous servomotor for precision and dynamic control in heavy load applications. High overload capacity, wide speed range, and dynamic torque range up to 1,100 Nm.



**Stainless servomotors** — IP69K rated for use in wet and washdown environments. Five motor sizes, each in 3 lengths. Planetary gearbox options available.



**Planetary servo gear units** — High precision, compact. 1-, 2-, and 3-stage designs in multiple performance classes. Wide range of ratios and torque ratings.



**Electric cylinders and linear motors** — High dynamics for precision linear movement, available in multiple sizes with 1,200 mm maximum stroke length.

## LOW VOLTAGE DRIVES



**Compact 48V drives** — compact extra low voltage drives available in parallel and right-angle configurations, with solid- or hollow-shaft designs.

- Onboard STO
- 360% overload capacity
- Optional onboard Ethernet/IP, PROFINet®, and EtherCAT®



**48V Servos and controllers** — Compact and high performance 48V controllers and servomotors, for demanding multi-axis applications such as AGVs, pallet shuttles, and load handling devices with high inertia mismatch.



**Powered Rollers** — 24V powered roller series for light duty material handling applications. 40W continuous power and 250% overload capacity.

## CABINET MOUNT INVERTERS & CONTROLLERS

SEW offers a full line of inverters, controllers, and functional safety components for everything from basic speed control to advanced kinematics.



**MOVIDRIVE® — high performance inverter series:**

- Control synchronous and asynchronous AC motors with/without an encoder
- High overload capacity and rated output to 160 kW
- Single cable technology for power and data with SEW's MOVILINK DDI® digital motor interface
- Expandable functional safety features
- Compatible with common fieldbus protocols
- Regenerative and power management options



**MOVITRAC® — standard performance inverter series:**

- Rated output to 250 kW
- Control synchronous and asynchronous AC motors with/without an encoder
- Functional safety options including CIP Safety
- Compatible with common fieldbus protocols
- Wide range of applications and IP ratings



**MOVI-C® — controller series** — Designed for challenging motion control tasks or simple single axis applications alleviating the main PLC load. Several performance classes available.

- Follows IEC 61131-3 language standards
- Integrated communication interface for all standard control systems
- Simple and central data management
- FSoE, PROFIsafe, other functional safety options
- Less programming when using MOVIKIT modules



**Functional Safety** — Optional scalable functional safety cards cover a wide range of safety functions including STO, SLS, and SDI, with no external wiring.

## ENGINEERING / AUTOMATION SOFTWARE



**MOVISUITE®** — New generation of machine and factory automation software used for planning, commissioning, operation and diagnostics, with modern graphical user-friendly interface. For MOVI-C platform. Available at no cost.



**MOVITOOLS®/Motion Studio** — Complete unit-independent engineering solution with ready-to-use application modules and user-friendly interface. Available at no cost.

## DECENTRALIZED INVERTERS AND DRIVES



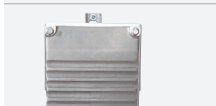
**MOVIGEAR®** — Mechatronic drive unit combines gearing, electronics, on-board communication and I/Os.

- Up to 50% less energy than conventional drives
- Wide speed range and high overload torque means fewer variants on the shelf
- Compact design, less installation space
- Runs cooler and quieter
- Perfect for horizontal material handling tasks



**MOVIMOT® Inverter Series** — motor-mounted, or near-motor mounted frequency inverter for decentralized control of synchronous and asynchronous motors.

- Speed control, torque and indexing applications
- Optional onboard Ethernet/IP, CIP Safety, and other common fieldbus
- Compatible with SEW modular design, up to 10HP
- High overload capacity - up to 250%
- Single cable technology for power and data with MOVILINK DDI® digital motor interface
- Can be fully connectorized for quicker installation



**Field Controller** — Decentralized motion and logic controller handles up to 16 axes using EtherCAT®. Use as a stand alone controller or for communication with a main PLC through common fieldbus.



**MOVIFIT®** — Inverter, distributor, and starter for decentralized drive applications up to 4kW, several fieldbus options, up to 16 I/O points.



**MOVIPRO®** — Decentralized drive and application controller, integrated brake control, ideal for intralogistics applications. Eliminates large control panels w/max 40HP

## MACHINE AUTOMATION



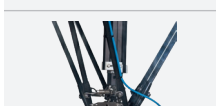
**MOVI-C® modular automation platform** — Reduce complexity and startup time with this true future-proof machine automation platform. This single-source solution includes controls, components and software all designed to work together seamlessly.



**MOVIKIT®** — Less programming and faster startup with these pre-configured software modules for common motion control tasks. For use with the MOVI-C automation software platform.



**StarterSet®** — Base package of expandable controls and components for most common machine types. Perfectly matched automation components for fast, flexible machine design.



**Robotics** — Drives and controls for path control, handling and kinematics. Simple startup using MOVIKIT® robotics software module, including 3D simulation.



**Operator Panels** — Stand alone DOP and WOP web visualization panels from 4" – 15"

## MAXOLUTION®

AN SEW-EURODRIVE COMPANY

This specialized group delivers leading edge technology in factory automation — from system design to planning and startup.



**AGVs / Mobile Assistants** — Factory automation production, distribution, and assembly tasks. Full vehicle fleets or application-based drive component packages. Load capacity to 3,000 kg.



**Contactless energy transfer** — The MOVITRANS® system is used for spot or line charging of AGVs and AMRs, and overhead monorail power.



**Overhead transport system** — track guided drives for driving, lifting, and turning. Positioning, mobile control, and communications options.

## DRIVE MAINTENANCE AND REPAIR



We offer a full suite of drive management and repair options, including **DriveRadar®** cloud-based predictive maintenance tool. On-site collection containers are available for units in need of maintenance or repair.



**GearOil by SEW-EURODRIVE** — This proprietary lubricant blend reduces friction and increases performance in component parts like seals and bearings, significantly increasing the performance and service life of your gear units.

**SEW  
EURODRIVE**

SEW-EURODRIVE  
220 Finch Road  
Wellford, SC 29385  
(P): (864) 439-7537  
cslyman@seweurodrive.com  
[www.seweurodrive.com](http://www.seweurodrive.com)